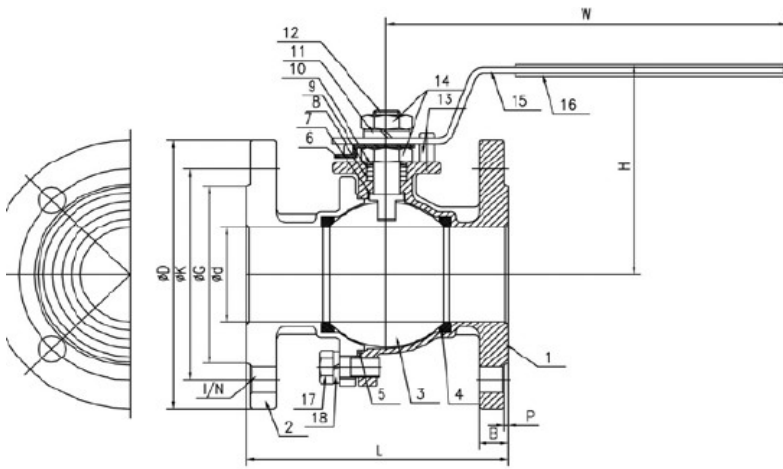
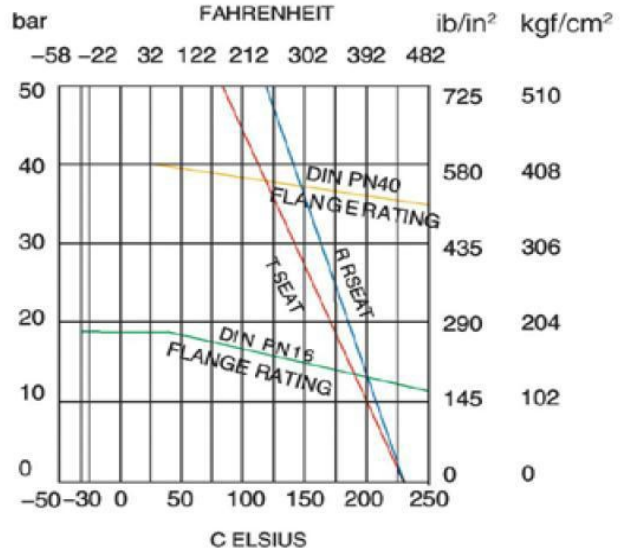


2-TLG kugelhaan Flanschende 2PC Ball Valve Flanged end

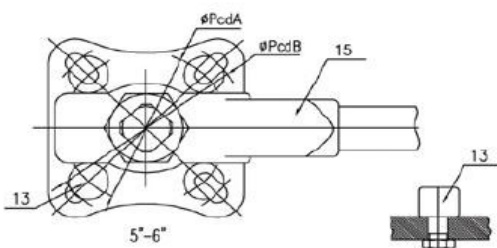
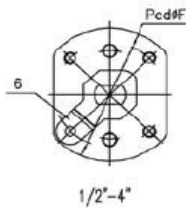


FEATURES

- ◆ Body & cap in ASTM-A351-CF8
ASTM-A351-CF8M
ASTM-A216-WCB
- ◆ Flange: DIN 2633 PN16
DIN 2635 PN40
- ◆ face to face: DIN 3202 F1/F4/F5
- ◆ Anti-static device, fire safe design
- ◆ Blow-out proof stem, lever operated
- ◆ Full port, solid ball/Hollow Ball
- ◆ Mounting Pad For ISO 5211



ITEM	PARTS	Q'TY	MATERIAL	
			T2F PN16	T2F PN16 -C
1	BODY	1	ASTM-A351-CF8M	ASTM-A216-WCB
2	CAP	1	ASTM-A351-CF8M	ASTM-A216-WCB
3	BALL	1	ASTM-A351-CF8M	ASTM-A351-CF8M
4	BALL SEAT	2	PTFE	PTFE
5	JOINT GASKET	1	PTFE	PTFE
6	STOPPER	1	AISI 304	AISI 304
7	THRUST WASHER	1	PTFE	PTFE
8	STEM PACKING	1	PTFE	PTFE
9	HIGH WASHER	1	AISI 304	AISI 304
10	B.V.WASHER	2	AISI 301	AISI 301
11	SPRING WASHER	1	AISI 304	AISI 304
12	STEM	1	AISI 316	AISI 316
13	STOP PIN	1	AISI 304	AISI 304
14	STEM NUT	2	AISI 304	AISI 304
15	HANDLE	1	AISI 304	AISI 304
16	PLASTIC COVER	1	PLASTIC	PLASTIC
17	BOLT		(1/2"-2" x 4pcs) (2 1/2"-3" x 6pcs)	AISI 304
18	SPRING WASHER		(4"-6" x 8pcs)	



DIMENSIONS

NOMINAL SIZE	Φd	ΦG	ΦK	ΦD	L	B	I/N	P	ISO 5211		H	W	ΦPdkA	ΦPcdB	TORQUE kgf-mm ²
									PCD	ΦF					
1/2"	15	45	65	95	115	14	14/4	2	4-42	M5	75	135	---	---	54
3/4"	20	58	75	105	120	16	14/4	2	4-42	M5	75	135	---	---	78
1"	25	68	85	115	125	16	14/4	2	4-50	M6	85	140	---	---	106
1-1/4"	32	78	100	140	130	16	18/4	2	4-50	M6	90	140	---	---	150
1-1/2"	38	88	110	150	140	16	18/4	3	4-70	M8	125	210	---	---	200
2"	50	102	125	165	150	18	18/4	3	4-70	M8	130	210	---	---	290
2-1/2"	65	122	145	185	170	18	18/4	3	4-70	M8	160	260	---	---	500
3"	80	138	160	200	180	20	18/8	3	4-102	M10	170	320	---	---	770
4"	100	158	180	220	190	20	18/8	3	4-102	M10	180	320	---	---	1130
5"	124	188	210	250	325	22	22/8	3	---	---	200	470	F10/Φ102	F12/Φ125	1500
6"	150	215	240	285	350	22	22/8	3	---	---	215	550	F10/Φ102	F12/Φ125	1800